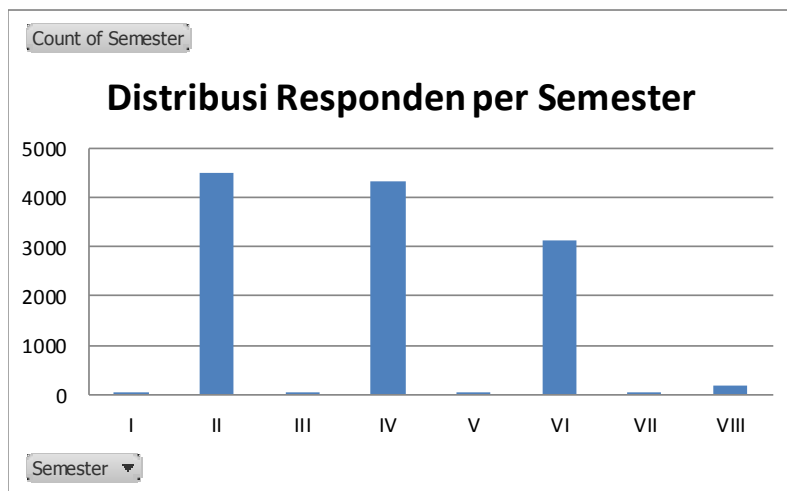
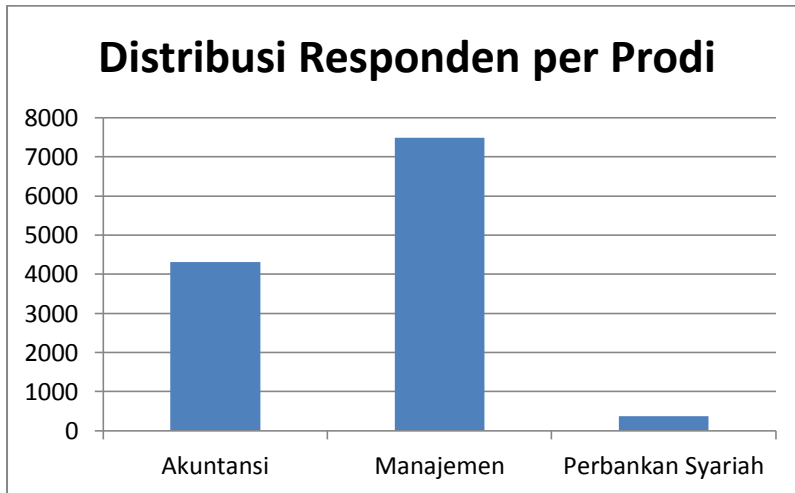


**REKAPAN KUESIONER FAKULTAS EKONOMI DAN BISNIS UNIVERSITAS ISLAM MALANG**

Kuesioner Masuk 14700 -> Kuesioner Layak 12170



\*) Abaikan Semester Gasal Dikarenakan Evaluasi Kuesioner Ini Dilakukan pada Semester Genap (kemungkinan karena mahasiswa kurang teliti dalam mengisi)

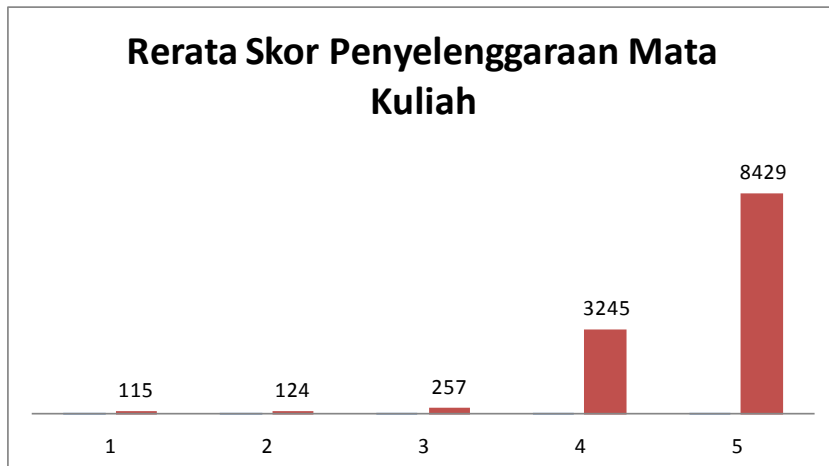
Row Labels	Count of Semester
I	3
II	4488
III	11
IV	4328
V	17
VI	3125
VII	35
VIII	163
<b>Grand Total</b>	<b>12170</b>

Row Labels	Count of Program Studi
Akuntansi	4306
Manajemen	7491
Perbankan Syari	373
<b>Grand Total</b>	<b>12170</b>

## REKAPAN KUESIONER PER ITEM

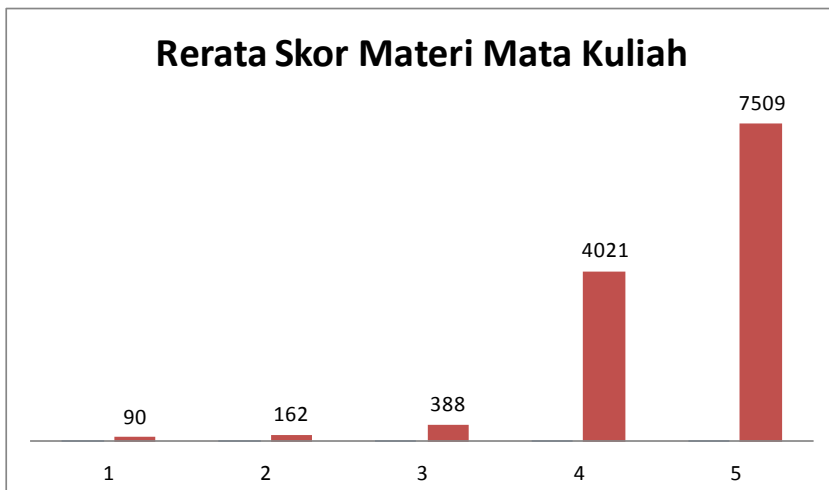
### KRITERIA 1

Nilai	Jumlah	Persentase
1	115	1%
2	124	1%
3	257	2%
4	3245	27%
5	8429	69%
Total	12170	100%



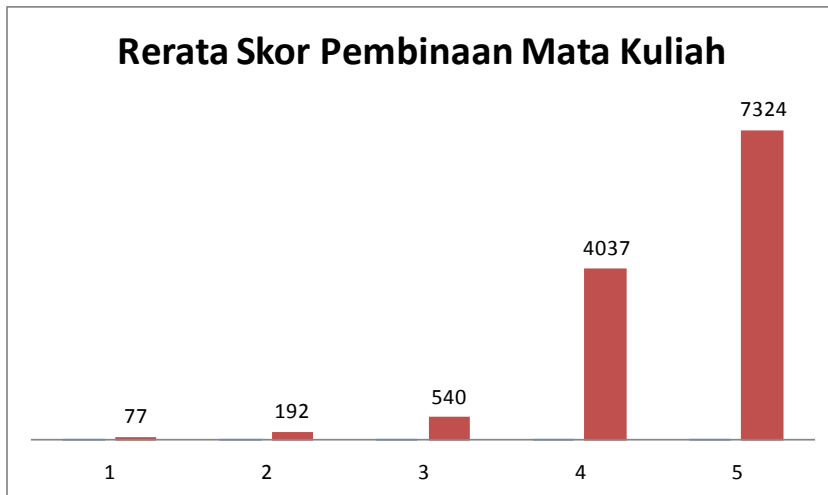
### KRITERIA 2

Nilai	Jumlah	Persentase
1	90	1%
2	162	1%
3	388	3%
4	4021	33%
5	7509	62%
Total	12170	100%



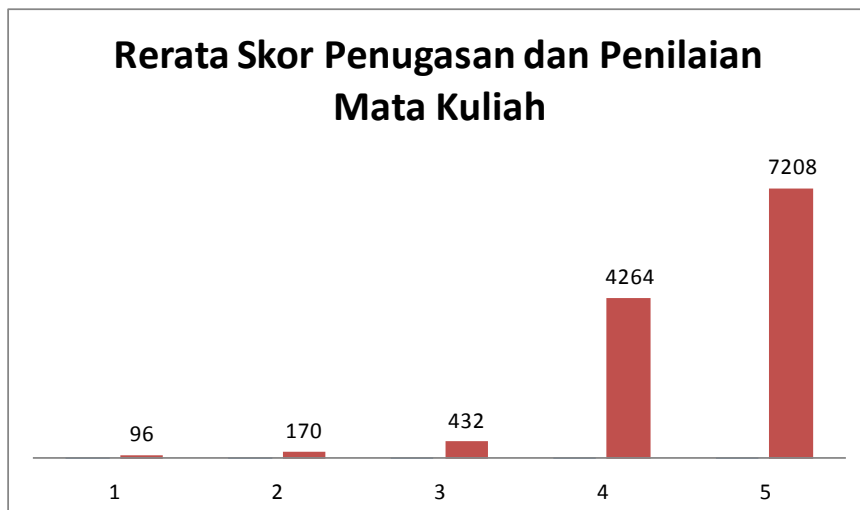
### KRITERIA 3

Nilai	Jumlah	Persentase
1	77	1%
2	192	2%
3	540	4%
4	4037	33%
5	7324	60%
Total	12170	100%

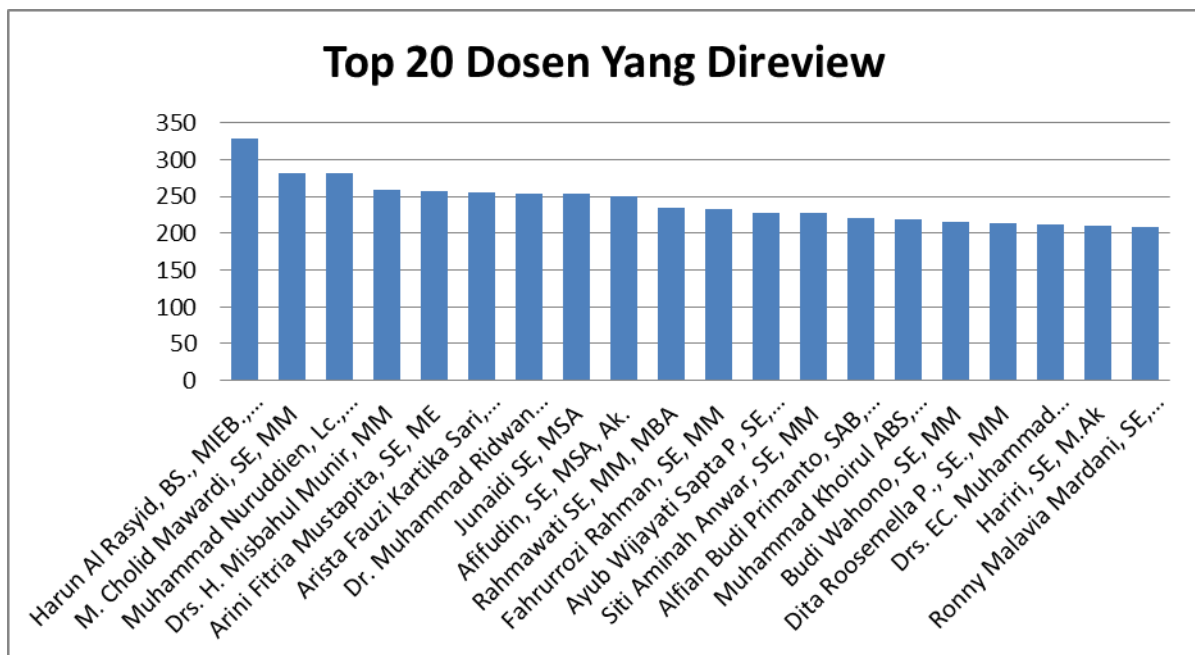


### KRITERIA 4

Nilai	Jumlah	Persentase
1	96	1%
2	170	1%
3	432	4%
4	4264	35%
5	7208	59%
Total	12170	100%



## TOP 25 DOSEN YANG DIREVIEW



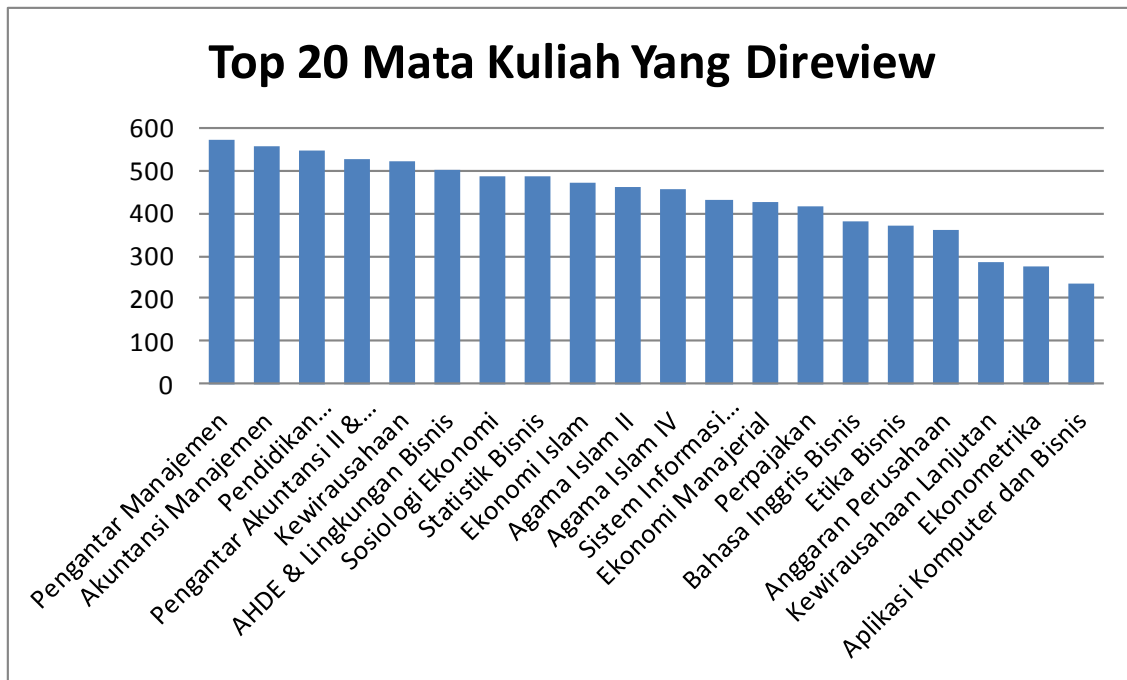
### Row Labels



### Count of Dosen Pembina Matakuliah

Row Labels	Count of Dosen Pembina Matakuliah
Harun Al Rasyid, BS., MIEB., Ph.D	329
M. Cholid Mawardi, SE, MM	282
Muhammad Nuruddien, Lc., MH	282
Drs. H. Misbahul Munir, MM	259
Arini Fitria Mustapita, SE, ME	257
Arista Fauzi Kartika Sari, S.Pd, MSA	256
Dr. Muhammad Ridwan Basalamah, SE, MM	254
Junaidi SE, MSA	253
Afifudin, SE, MSA, Ak.	250
Rahmawati SE, MM, MBA	234
Fahrurrozi Rahman, SE, MM	232
Ayub Wijayati Sapta P, SE, M.Si	228
Siti Aminah Anwar, SE, MM	227
Alfian Budi Primanto, SAB, MBA	220
Muhammad Khoirul ABS, SE, MM	219
Budi Wahono, SE, MM	215
Dita Roosemella P., SE., MM	213
Drs. EC. Muhammad Mansur, M.Si	212
Hariri, SE, M.Ak	210
Ronny Malavia Mardani, SE, MM	209
Muhammad Rizal, SE, ME	207
Aleria Irma Hateny, SE, MM	199
Dyah Metha Nurfitriasih, S.Pd., M.Sc	195
Dr. Agus Salim, SE., MM	193
Restu Millaningtyas, SE, MM	182

## TOP 25 MATA KULIAH



### Row Labels

Count of Nama Matakuliah (Tulis Lengkap Jangan Disingkat)

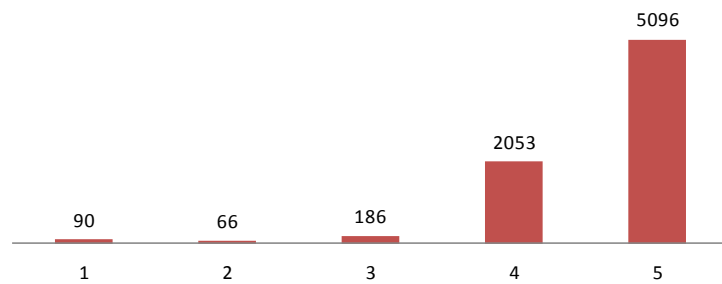
Pengantar Manajemen	568
Akuntansi Manajemen	555
Pendidikan Kewarganegaraan	547
Pengantar Akuntansi II & Prak	524
Kewirausahaan	519
AHDE & Lingkungan Bisnis	498
Sosiologi Ekonomi	484
Statistik Bisnis	484
Ekonomi Islam	469
Agama Islam II	460
Agama Islam IV	453
Sistem Informasi Manajemen	428
Ekonomi Manajerial	424
Perpajakan	414
Bahasa Inggris Bisnis	380
Etika Bisnis	368
Anggaran Perusahaan	359
Kewirausahaan Lanjutan	285
Ekonometrika	274
Aplikasi Komputer dan Bisnis	234
Bahasa Indonesia Bisnis	208
Pasar Uang dan Pasar Modal	186
Operasional Keuangan Syariah (OKS)	183
Akuntansi Pajak	177
Audit I	174

## PRODI MANAJEMEN

### KRITERIA 1

Nilai	Jumlah	Persentase
1	90	1%
2	66	1%
3	186	2%
4	2053	27%
5	5096	68%
Total	7491	100%

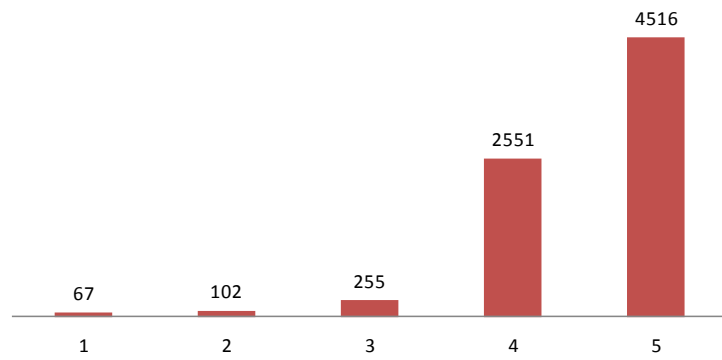
### Rerata Skor Penyelenggaraan Mata Kuliah



### KRITERIA 2

Nilai	Jumlah	Persentase
1	67	1%
2	102	1%
3	255	3%
4	2551	34%
5	4516	60%
Total	7491	100%

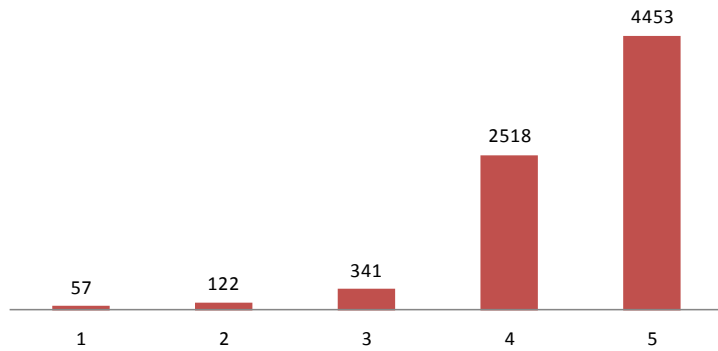
### Rerata Skor Materi Mata Kuliah



### KRITERIA 3

Nilai	Jumlah	Persentase
1	57	1%
2	122	2%
3	341	5%
4	2518	34%
5	4453	59%
Total	7491	100%

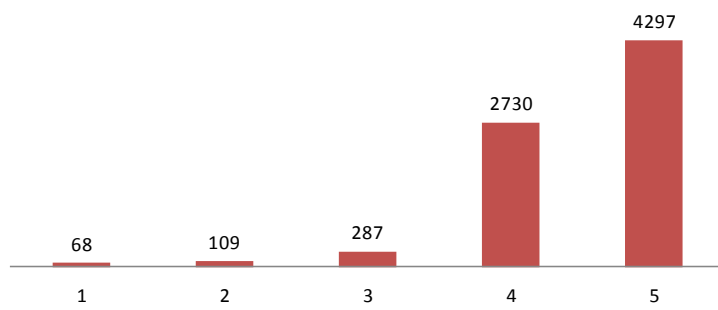
#### Rerata Skor Pembinaan Mata Kuliah



### KRITERIA 4

Nilai	Jumlah	Persentase
1	68	1%
2	109	1%
3	287	4%
4	2730	36%
5	4297	57%
Total	7491	100%

#### Rerata Skor Penugasan dan Penilaian Mata Kuliah

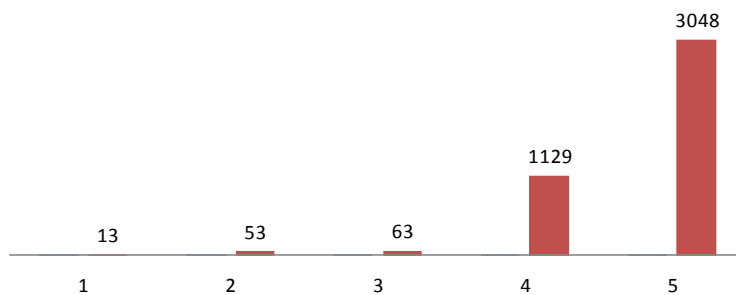


## PRODI AKUNTANSI

### KRITERIA 1

Nilai	Jumlah	Persentase
1	13	0%
2	53	1%
3	63	1%
4	1129	26%
5	3048	71%
Total	4306	100%

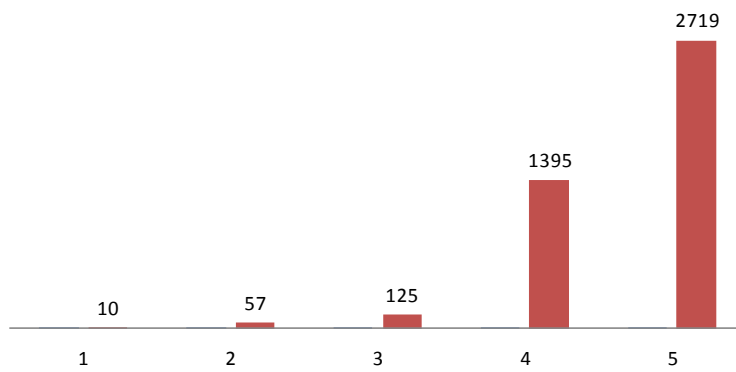
### Rerata Skor Penyelenggaraan Mata Kuliah



### KRITERIA 2

Nilai	Jumlah	Persentase
1	10	0%
2	57	1%
3	125	3%
4	1395	32%
5	2719	63%
Total	4306	100%

### Rerata Skor Materi Mata Kuliah

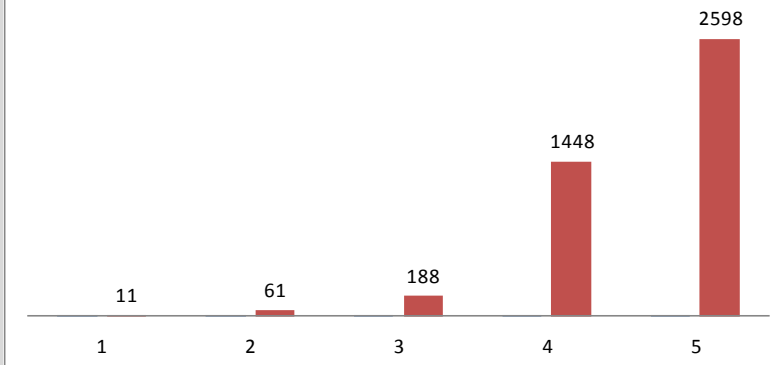




### KRITERIA 3

Nilai	Jumlah	Persentase
1	11	0%
2	61	1%
3	188	4%
4	1448	34%
5	2598	60%
Total	4306	100%

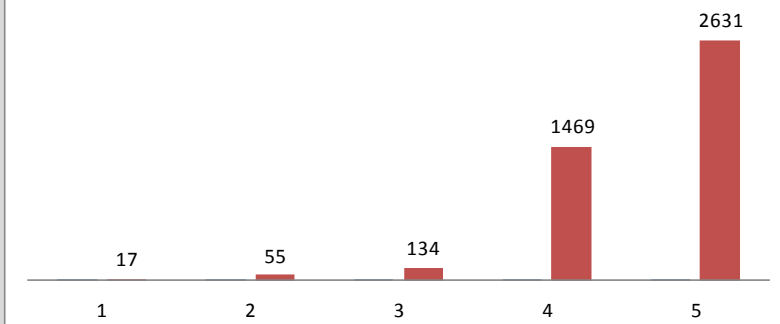
#### Rerata Skor Pembinaan Mata Kuliah



### KRITERIA 4

Nilai	Jumlah	Persentase
1	17	0%
2	55	1%
3	134	3%
4	1469	34%
5	2631	61%
Total	4306	100%

#### Rerata Skor Penugasan dan Penilaian Mata Kuliah

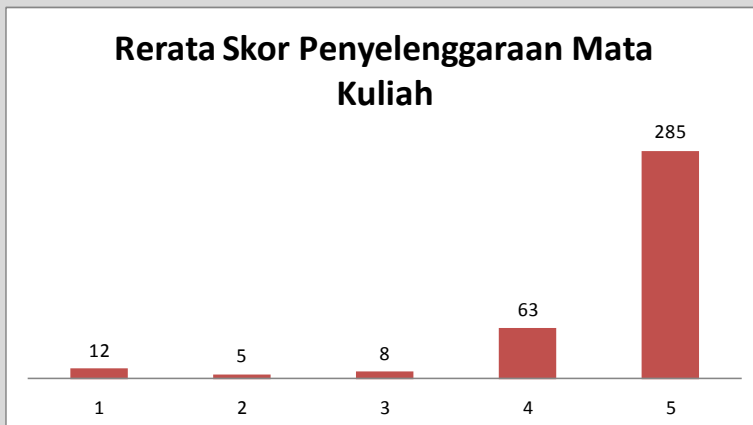


## PRODI PERBANKAN SYARIAH

### PERBANKAN SYARIAH

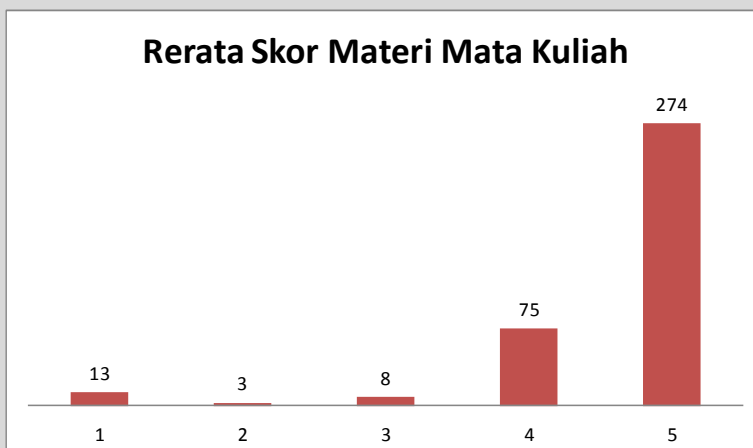
#### KRITERIA 1

Nilai	Jumlah	Persentase
1	12	3%
2	5	1%
3	8	2%
4	63	17%
5	285	76%
Total	373	100%



#### KRITERIA 2

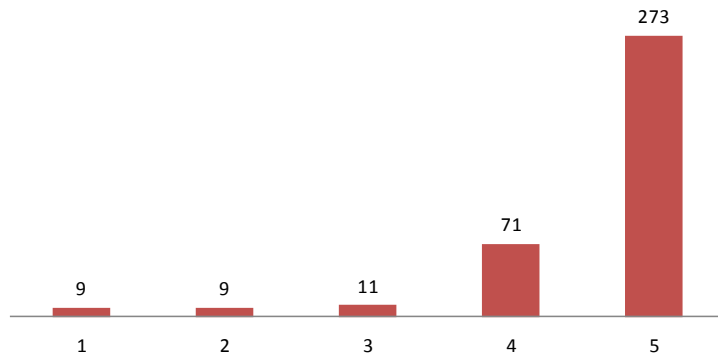
Nilai	Jumlah	Persentase
1	13	3%
2	3	1%
3	8	2%
4	75	20%
5	274	73%
Total	373	100%



### KRITERIA 3

Nilai	Jumlah	Persentase
1	9	2%
2	9	2%
3	11	3%
4	71	19%
5	273	73%
Total	373	100%

#### Rerata Skor Pembinaan Mata Kuliah



### KRITERIA 4

Nilai	Jumlah	Persentase
1	11	3%
2	6	2%
3	11	3%
4	65	17%
5	280	75%
Total	373	100%

#### Rerata Skor Penugasan dan Penilaian Mata Kuliah

